

# Who is in the Hearing Hub?

Resources you can access, all in one convenient space!



**MACQUARIE**  
University

**SPEECH AND HEARING CLINIC**



# HEARING MATTERS AUSTRALIA

Support from real life experience



## ABOUT US

Hearing Matters Australia (HMA) is dedicated to helping Australians with hearing loss. We provide information and support to people with hearing loss and their families. We advocate on your behalf to all levels of government and the corporate sector. We are a voluntary, self-funded, not-for-profit organisation incorporated in New South Wales.

## OUR MISSION

Our mission is to provide unbiased advice and support based on lived experience to help people living with hearing loss achieve optimal hearing management and an improved quality of life.

## SERVICES

Peer to Peer Support

Government Advocacy

Outreach Programs

Hearing Aid Bank

Information Centre

Hearing Help Card

Click here! Throughout this document all bubbles, websites, and emails are links!



[admin@hearingmattersaustralia.org](mailto:admin@hearingmattersaustralia.org)



Ground Floor Suite 600, Australian Hearing Hub, Macquarie University NSW 2109



(02) 9878 6089

[www.hearingmattersaustralia.org](http://www.hearingmattersaustralia.org)



# Hearing Australia

## ABOUT

The goal of Hearing Australia is to keep you connected to the people and the life you love. Hearing Australia is the nation's largest provider of government-funded hearing services for children, young adults up to the age of 26, eligible Aboriginal and Torres Strait Islander people, pensioners and veterans.

## KEY SERVICES

Hearing Australia has many audiologists that excel in specialised fields who are able to check your hearing and help get you get started on your hearing journey!

**AUDIOLOGISTS TO  
ASSESS YOUR HEARING**

**FIT HEARING DEVICES**

**COUNSELLING AND  
REHABILITATION**

**HEARING CHECK UPS**

**HOME VISITS**

Hearing Australia also provides many more services to help you rediscover your joy of sound. Just head to their website to check them out!



Ground Floor, Australian Hearing  
Hub, Macquarie University  
NSW 2109



134 432

[www.hearing.com.au](http://www.hearing.com.au)



# NextSense

Redefine what's possible



## ABOUT

NextSense provides education, cochlear implants, allied health, therapies, research and clinical services to children, adults and their families across the Australia

## HOW THEY CAN HELP

NextSense will help you break down any barriers you encounter on your way to reaching your potential. This means that your hearing journey is in your hands! You will have a team of experts supporting you and helping you access the wide range of services offered.

COCHLEAR IMPLANT  
PROGRAM

PEDIATRIC  
AUDIOLOGY

EARLY INTERVENTION  
FOR HEARING

ALLIED HEALTH AND  
THERAPY



NextSense is a registered NDIS provider and has many downloadable guides and handbooks on their website!



hello@nextsense.org.au



Ground Floor, Australian Hearing  
Hub, Macquarie University  
NSW 2109



1300 581 391

[www.nextsense.org.au](http://www.nextsense.org.au)



# Cochlear Ltd

## ABOUT

Cochlear Ltd is an Australian company that develops, manufactures and supplies implantable hearing devices. Cochlear Ltd has their headquarters on the Macquarie University campus and their Asia-Pacific section is based in the Australian Hearing Hub.

## IN A NUTSHELL



Helped 600,00+ people access implantable devices.



Over 4000 dedicated, expert employees globally.



More than 180 Countries served worldwide, with the HQ in Sydney.



More than 140,000 Cochlear Family members providing community, support and inspiration.



Solid collaborations with audiologists, surgeons and other hearing professionals to provide the best solutions and support.



Strong government and non-government relationships to improve worldwide access to life-changing hearing technology.



[hearinghelp@cochlear.com](mailto:hearinghelp@cochlear.com)



1 University Avenue,  
Macquarie University, NSW, 2109,  
Australia



1800 875 212

[www.cochlear.com](http://www.cochlear.com)



# The Shepherd Centre

Giving deaf children a voice



## ABOUT

At The Shepherd Centre your family is the priority. If you are concerned about your child's hearing or your child has already been diagnosed with a hearing loss, The Shepherd Centre is a one-stop-shop that functions to support your child's hearing and speech.

## WHAT TO EXPECT

On your first visit you will meet with a highly experienced Child and Family Counsellor who will help you plan the best path forward for your child's individual needs.

## PROGRAM OVERVIEW

### EARLY INTERVENTION SERVICES

Fun holistic group programs to give your child the best start in life!

### SOUND DIRECTION PLUS PROGRAM

Listening checks and regular sessions for children with mild unilateral hearing loss.

### TELEHEALTH PROGRAMS

Flexible online appointments. The team also visits rural and regional areas of NSW during the year!

### YOUTH MENTORING

Partnered with 'Hear For You' to offer accessible mentoring programs for teens with hearing loss aged 12-18 years.



[familycare@shepherdcentre.org.au](mailto:familycare@shepherdcentre.org.au)



Ground Floor, Australian Hearing Hub, Macquarie University  
NSW 2109



(02) 9370 4400

[www.shepherdcentre.org.au](http://www.shepherdcentre.org.au)

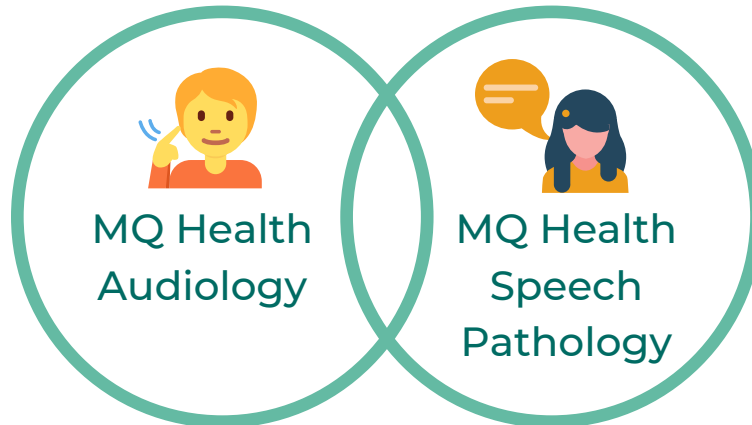


# MQ Speech and Hearing Clinic

We  ndis

## ABOUT

The Macquarie University Speech and Hearing Clinic has two clinical areas:



Their team of experienced clinicians are passionate about delivering quality family centered care. The specialists are also involved in research, lecturing, teaching and training at Macquarie University, keeping them at the forefront of the latest techniques and evidence-based treatments.

## SERVICES

ADULT HEARING  
ASSESSMENT

FITTING OF HEARING  
DEVICES

BALANCE AND  
AUDITORY PROCESSING  
ASSESSMENT

HEARING LOSS  
PREVENTION AND  
NOISE PROTECTION



[shc@mqhealth.org.au](mailto:shc@mqhealth.org.au)



Ground Floor, Australian Hearing  
Hub, Macquarie University  
NSW 2109



(02) 9850 2900

[www.mqhealth.org.au/speech-and-hearing-clinic](http://www.mqhealth.org.au/speech-and-hearing-clinic)